



## Detachable Plastic Combi Hinges (DPCH):



## General Information:

**Function:** To connect panels or aluminium profiles.

**Features:**

1. Detachable.
2. All 'Detachable Plastic Combi Hinges' are black.

**Note:**

1. All 'Plastic Combi Hinges' excluding 'PCH 20x20' require M6 countersunk screws for fastening.

## Item Description:

DPCH 30 x 30 - S8, L

DPCH 40 x 40 - S10, L

DPCH 45 x 45 - S10, L

DPCH 30 x 30 - S8, R

DPCH 40 x 40 - S10, R

DPCH 45 x 45 - S10, R

## Item Number:

C095K3030L08



C095K4040L10



C095K4545L10



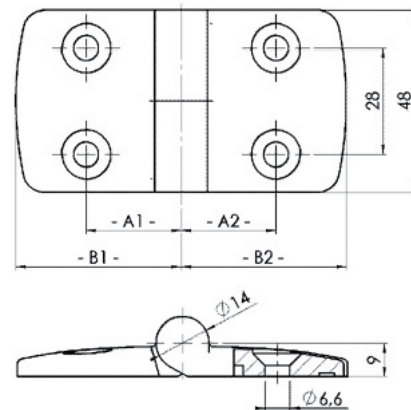
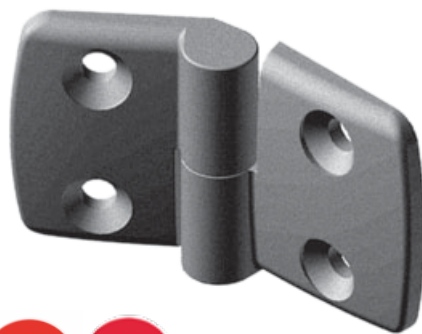
C095K3030R08



C095K4040R10



C095K4545R10

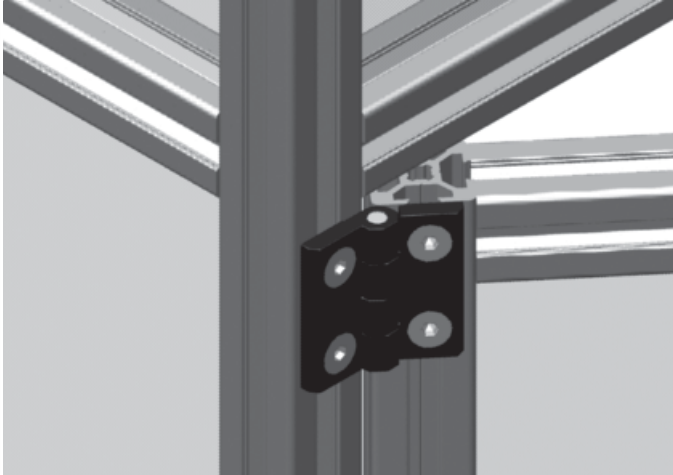


## Technical Information:

Item Description	Dim -A1- (mm)	Dim -A2- (mm)	Dim -B1- (mm)	Dim -B2- (mm)	Max Load (Nm)	Locating Pins	Weight (g)	Material
DPCH 30x30-S8, L/R	17.5	17.5	29.5	29.5	25.0	S8	34.0	Wings: Fibreglass reinforced nylon Bolt: Stainless
DPCH 40x40-S10, L/R	22.5	22.5	38.5	38.5	35.0	S10	42.0	
DPCH 45x45-S10, L/R	25.0	25.0	43.5	43.5			45.0	



**Metal Hinges (MH):**



**General Information:**

**Function:** To connect panels or aluminium profiles.

**Features:**

1. Detachable.
2. All 'Detachable Plastic Combi Hinges' are black.

**Note:**

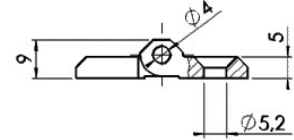
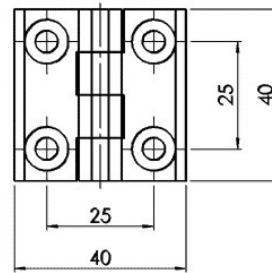
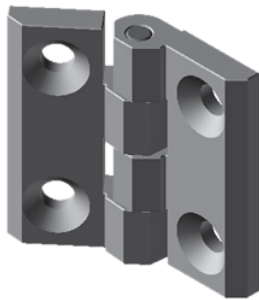
1. All 'Plastic Combi Hinges' excluding 'PCH 20x20' require M6 countersunk screws for fastening.

**Item Description:**

MH 40 x 40

**Item Number:**

C95005

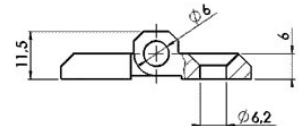
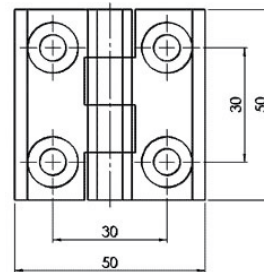


**Item Description:**

MH 50 x 50

**Item Number:**

1.25.0005.0



**Technical Information:**

Item Description	Max Load (Nm)	Locating Pins	Weight (g)	Colour/Finish	Material: Wings	Material: Bolt
MH 40 x 40	50.0	Without	45.0	Black/Powder coated	Die-cast Zn None	Zn plated steel None
MH 50 x 50			90.0			



## Metal Hinges (MH):



## General Information:

**Function:** To connect panels or aluminium profiles.

**Features:**

1. Detachable.
2. All 'Detachable Plastic Combi Hinges' are black.

**Note:**

1. All 'Plastic Combi Hinges' excluding 'PCH 20x20' require M6 countersunk screws for fastening.

## Item Description:

MH 50 x 65

## Item Number:

1.25.0006.0

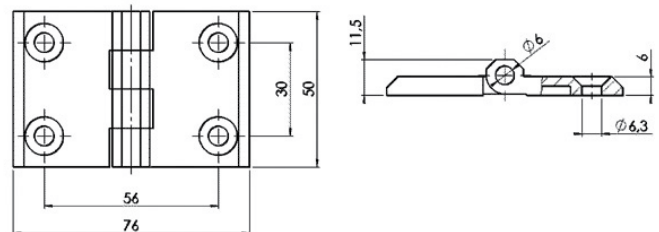
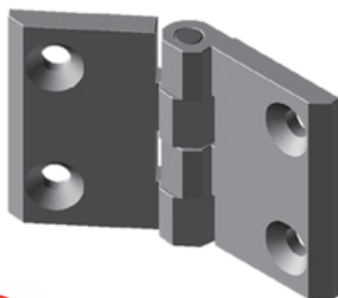


## Item Description:

MH 50 x 76

## Item Number:

C95007



## Technical Information:

Item Description	Max Load (Nm)	Locating Pins	Weight (g)	Colour/Finish	Material: Wings	Material: Bolt
MH 50 x 65	-	Without	-	Black/Powder coated	Die-cast Zn None	Zn plated steel None
MH 50 x 76	90.0		145.0			



**Metal Hinges (MH):**



**General Information:**

**Function:** To connect panels or aluminium profiles.

**Features:**

1. Detachable.
2. All 'Detachable Plastic Combi Hinges' are black.

**Note:**

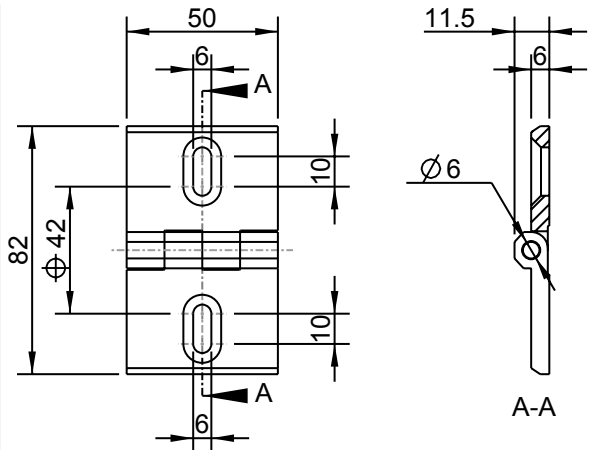
1. All 'Plastic Combi Hinges' excluding 'PCH 20x20' require M6 countersunk screws for fastening.

**Item Description:**

MH 50 x 80

**Item Number:**

1.25.0007.0

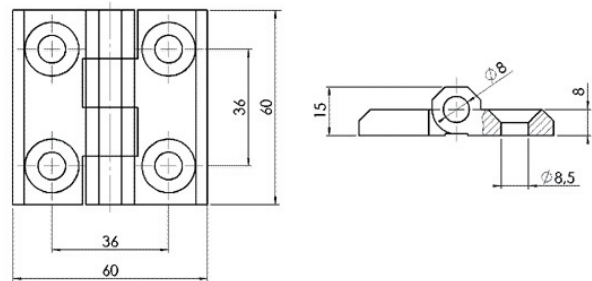
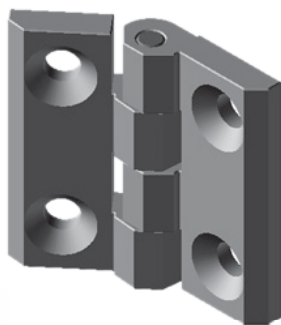


**Item Description:**

MH 60 x 60

**Item Number:**

C95009

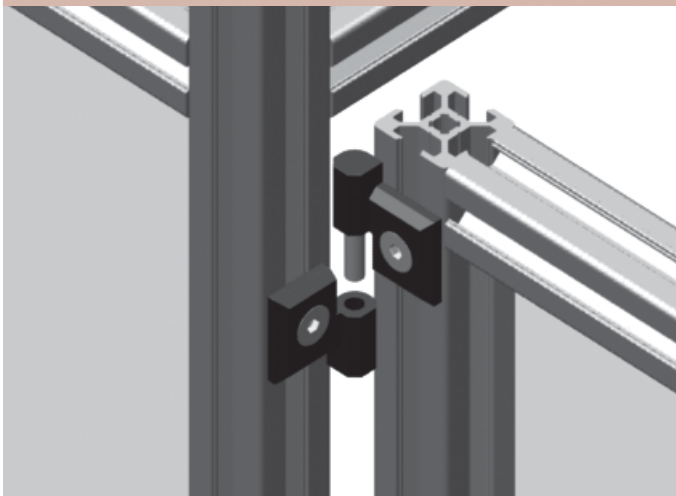


**Technical Information:**

Item Description	Max Load (Nm)	Locating Pins	Weight (g)	Colour/Finish	Material: Wings	Material: Bolt
MH 50 x 80	-	Without	-	Black/Powder coated	Die-cast Zn None	Zn plated steel None
MH 60 x 60	60.0		168.0			



## Detachable Metal Hinges (DMH):



## General Information:

**Function:** To connect panels or aluminium profiles.

**Features:**

1. Detachable.
2. All 'Detachable Plastic Combi Hinges' are black.

**Note:**

1. All 'Plastic Combi Hinges' excluding 'PCH 20x20' require M6 countersunk screws for fastening.

## Item Description:

DMH 30 x 30 - L

DMH 40 x 40 - L

DMH 30 x 30 - R

DMH 40 x 40 - R

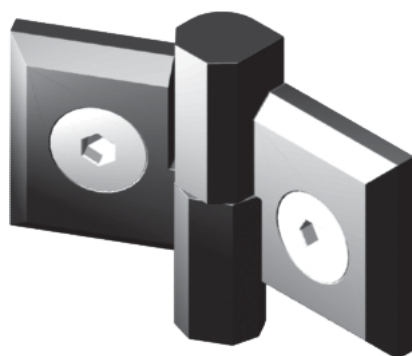
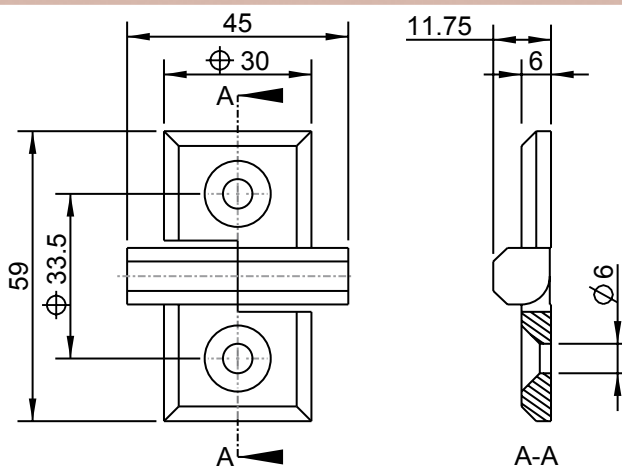
## Item Number:

C0953030L

C0954040L

C0953030R

C0954040R

M6x12  
53.60

## Technical Information:

Item Description	Dim -A1- (mm)	Dim -A2- (mm)	Dim -B1- (mm)	Dim -B2- (mm)	Max Load (Nm)	Locating Pins	Weight (g)	Material
DMH 30x30 - L	-	-	-	-	-	Without	-	Bolt: Stainless steel
DMH 40x40 - L	-	-	-	-	-			
DMH 30x30 - R	-	-	-	-	-			
DMH 40x40 - R	-	-	-	-	-			



**Metal Combi Hinge & Locking Lever (MCH & LL):**

**General Information:**



**Function:** To connect panels or aluminium profiles.

**Features:**

- 1. All Black Combi hinges are black.

**Note:**

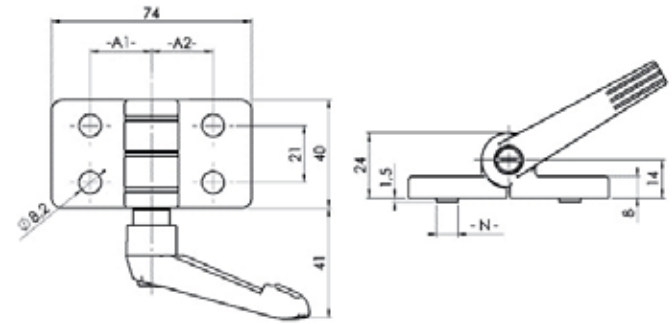
- 1. Requires M6 socket head capscrews for fastening.

**Item Description:**

**Item Number:**

MCH & LL 45 x 45 - S10

C095ZF45x45F00S



**Technical Information:**

Item Description	Max Load (Nm)	Locating Pins	Weight (g)	Colour	Finish	Material
MCH&LL45x45-S10	250.0	S10	211.	Black	Powder coated	Die-cast zinc



## Metal Hinge - Constant Friction (MHF):

## General Information:



**Function:** To connect panels or aluminium profiles.

**Features:**

1. All 'Plastic Combi Hinges' are black.

**Note:**

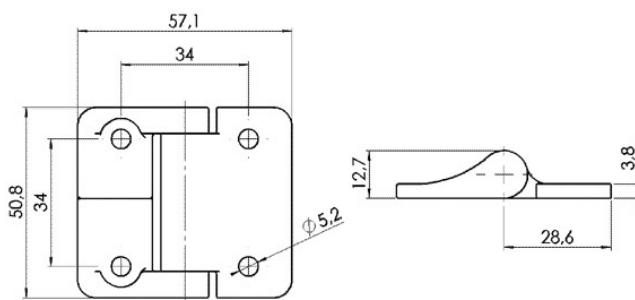
1. Requires M6 socket head cap screws to be fastened.

## Item Description:

MHF 58 x 51

## Item Number:

C095032

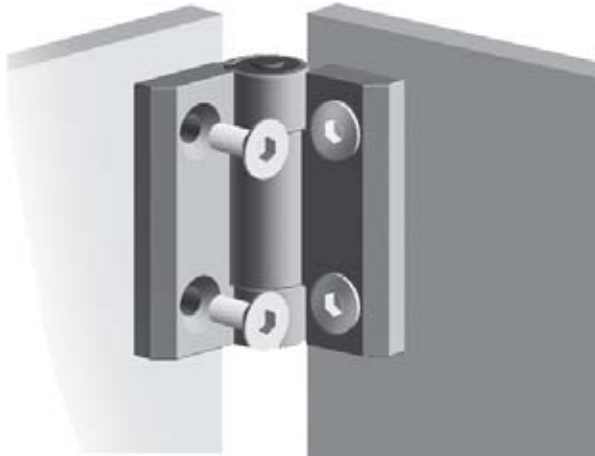


## Technical Information:

Item Description	Max Load (Nm)	Locating Pins	Weight (g)	Colour	Finish	Material
MHF 58 x 51	50.0	Without	39.0	Black	Urethan enamel	Die-cast zinc



**Positioning Metal Hinge (PMH):**



**General Information:**

**Function:** To connect panels or aluminium profiles. To hold a door or flap at an angle of 85° or 175° or to keep it securely closed. Also supports light-weight flaps.

**Features:**

- 1. Holds position at an angle of 85° or 175°.

**Note:**

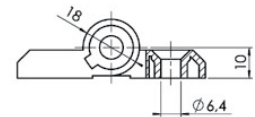
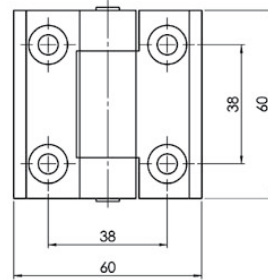
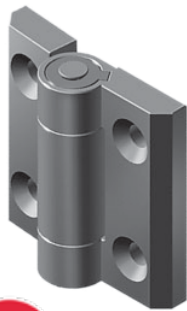
- 1. Requires M6 countersunk screws to be fastened.

**Item Description:**

PMH 60 x 60

**Item Number:**

C095009F



**Technical Information:**

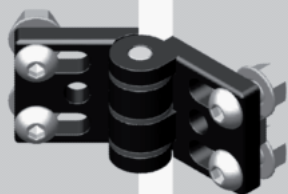
Item Description	Max Load (Nm)	Locating Pins	Weight (g)	Colour	Finish	Material
PMH 60 x 60	40.0	Without	140.0	Black	Powder coated	Die-cast zinc





## Die-cast Zn Hinge 40, Oblong Holes (OHH):

## General Information:



**Function:** To connect panels or aluminium profiles.

**Features:**

1. Oblong holes for allow adjustment.

**Note:**

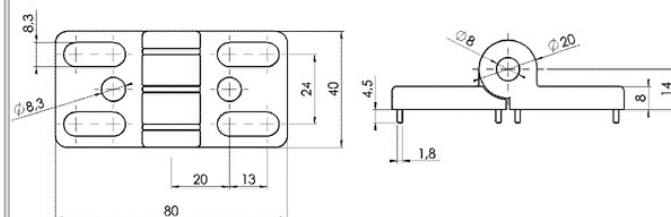
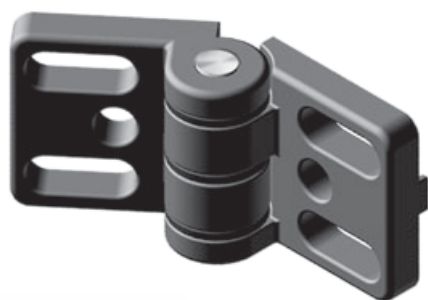
1. Requires M8 screws for fastening.

## Item Description:

OHH 40 x 80

## Item Number:

C095300N10



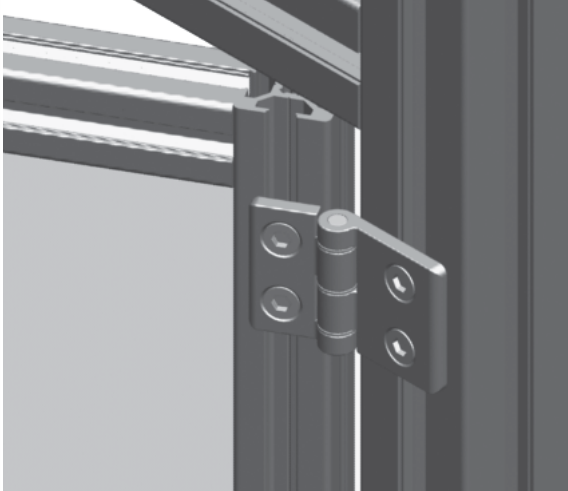
## Technical Information:

Item Description	Max Load (Nm)	Locating Pins	Weight (g)	Colour	Finish	Material
OHH 40 x 80	250.0	S10	175.0	Black	Powder coated	Die-cast zinc



Die-cast Aluminium Hinge (AH):

General Information:



**Function:** To connect panels or aluminium profiles.

**Features:**

- 1. Abrasion-free guide bushings.

**Note:**

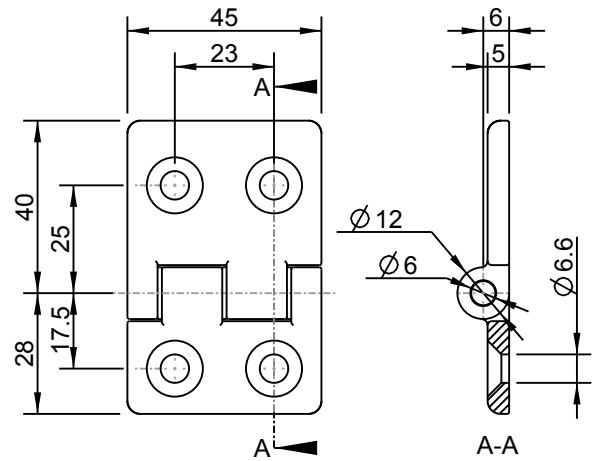
- 1. Requires M6 countersunk screws for fastening.

Item Description:

AH 30 x 45

Item Number:

3.842.535.641



Technical Information:

Item Description	Max Force (N)	Locating Pins	Weight (g)	Colour	Finish	Material
AH 30 x 45	300.0	Without	-	Grey	Nickel-faced	Die-cast Natural